

### SMG Engineered Solutions:

- **SoundDelete™ acoustical banners and ceiling clouds**
- **SoundDelete™ drop ceiling reinforcement systems, soundproofing materials**
- **SoundShadow™ sound masking systems**

### SMG Services:

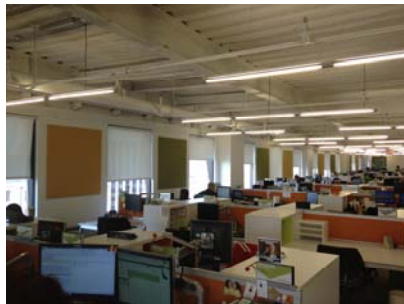
- **Acoustical space analysis and engineering**
- **Custom product design and manufacturing**
- **Project management: design, installation, project training**

**Sound Management Group creates customized solutions for office facilities.**

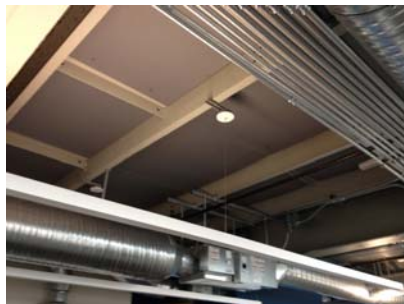
## Office Facilities: Reduce distractions, create speech privacy, improve efficiency



*SoundDelete™ acoustical wall panels; videoconference room*



*SoundDelete™ wall panels and SoundShadow™ sound masking in open plan office*



*SoundDelete™ ceiling panels in open plan setting*

The most common complaints in today's office concern excessive noise and intrusive conversations from adjacent space. These problems cause distractions and destroy speech privacy. Since sound greatly affects the way we work and feel, it is important that facility managers and designers consider and address acoustical issues. Sound Management Group is the complete source for providing acoustical design support for existing and planned space. We engineer solutions that increase the efficiency and satisfaction of your company's biggest asset, its employees.

### **Benefits of Proper Acoustic Treatments**

- **Efficiency:** minimize distractions that make concentration and communication difficult
- **Speech privacy:** for space where confidentiality is vital: executive space, human resources, etc.
- **Quality:** corrects distortion of voice signals transmitted from video/teleconference rooms and offices with speakerphones. Improves vocal clarity in larger spaces: training areas, meeting rooms, auditoriums
- **Overall employee satisfaction and stress reduction**

**The experience and knowledge to integrate these products in the acoustically correct and economically efficient solution.**

**Typical noise problems:**

- Distractions
- Speech privacy
- Excessive noise levels
- Compliance: HIPAA, GLBA, human resource environments

Numerous independent studies have identified the correct acoustical environment as improving worker efficiency by 14%.

The "tin can" effect produced by speakerphones is a function of the room that the equipment is transmitting from, not the speakerphone itself.

Sound Management Group creates customized solutions for office facilities.



*SoundShadow™ sound masking and SoundDelete™ cloud panels reduce noise in open office*

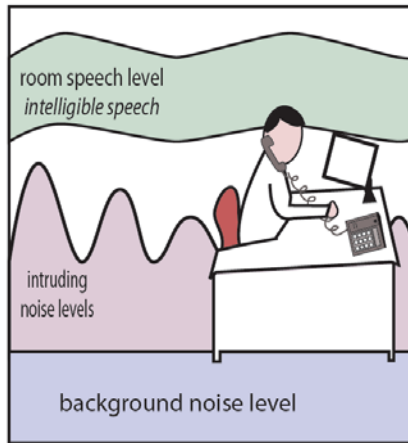


*SoundDelete™ clouds and Impressions digital print panels in conference room*

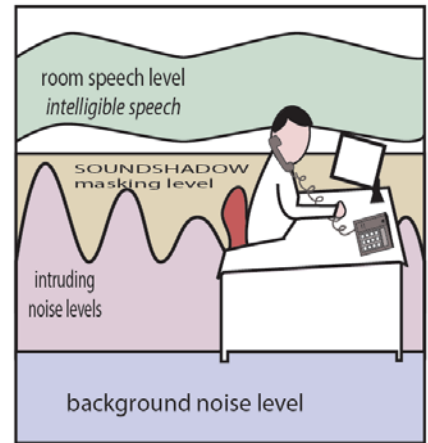


*SoundDelete™ 1/2" acoustical wall panels compliment this architectural foyer*

**Acoustic benefits of SoundShadow™ Sound Masking**



*In rooms without masking, sounds from nearby conversations or external noises can cause distractions.*



*Sound Shadow Sound Masking systems reduce distraction by operating at a level above that of most intruding noise, but below that of normal conversation.*

SMG Products	125 Hz	250 Hz	500 Hz	1000 Hz	2000 Hz	4000 Hz	NRC
1" Panel 6 PCF Fabric Faced	.08	.34	.79	1.07	1.09	1.07	.80
1" Panel 6 PCF Fabric Faced Tackable Surface	.12	.45	.98	1.05	1.00	1.03	.85
2" Panel 6 PCF Fabric Faced	.25	.99	1.20	1.16	1.06	.95	1.00

SMG Products, Sa/unit	125 Hz	250 Hz	500 Hz	1000 Hz	2000 Hz	4000 Hz	Sa/unit	NRC
Baffle, 6 PCF 2Dx48Wx24"H	3.01	6.19	13.02	16.82	15.38	15.05	12.85	1.60
Banner 2Dx48Wx24"H (nominal)	.45	7.68	12.88	16.68	15.62	15.42	13.20	1.60